

# PLAIN TOWNSHIP NEWS

ISSUE 4

WINTER 2005



**Pamela S. Bossart, Trustee**  
**Louis P. Giavasis, Trustee**  
**Albert P. Leno II, Trustee**  
**Claude W. Shriver II, Fiscal Officer**



## *Meeting Times* *Board of Trustees*

2nd and 4th Tuesdays  
of the month - 7:00 pm

## *Zoning Board of Appeals*

1st Wednesday  
of the month - 7:00 pm

## *Zoning Commission*

Wednesday in 2nd full week  
of the month - 7:00 pm

## *In this Issue...*

- \* Zoning Resolution Revisions
- \* Fire and Safety Issues
- \* Historical Society
- \* Drainage Issues
- \* Parks Dept. Programs
- \* Road Dept. Reminders
- \* Recycling
- \* Yard Waste & Christmas Tree Disposal

## *A Message from the Board of Trustees*

### **Public Hearings to Consider an Updated and Revised Zoning Resolution—**

Public hearings for the proposed revised and updated Plain Township Zoning Resolution are expected to be held by the Zoning Commission and the Trustees early in 2006.

A committee appointed by the Trustees and chaired by Zoning Commission member Jim McVay presented its recommendations to the Trustees early this year. Copies of the proposal have been available to the public and posted on the Township's web site for several months.

Since then, the Trustees have been reviewing the proposed regulations at several informal public meetings, and have received input from Committee members and others who attended. Some corrections and modifications were made and the Resolution will be considered for adoption by the Trustees once the required public hearing process has been completed.

When the Plain Township Comprehensive Mini-Master Plan was adopted in 2002, recommendations were made which could only be accomplished through changes in zoning regulations. Township officials have been diligently working to put into place many of those recommendations since that time. When a reformatted and updated Resolution is in place, most of the recommendations will have been completed.

As noted in previous issues of this newsletter, this has been a

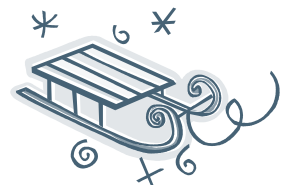
lengthy review process; however, several zoning amendments have already been adopted and are being incorporated in the proposed Resolution. Amendments have been made to better control strip mining operations; add landscaping/buffer requirements to protect residential neighborhoods; increase lot sizes in rural and single family districts and add a new smaller lot single family district. There is also an amendment in process which would modify accessory use provisions. However, since the Resolution had not been updated in a comprehensive manner for over ten (10) years, the proposed Resolution includes additional revisions such as an updated format; to conform the regulations with changes in zoning law and recent court decisions; and to address concerns of an ever-changing society.

Please contact the Township Zoning Office for additional information on dates and times of public hearings or to review the proposed regulations. Copies will also be available on the Township's web site for you to review at your convenience, at: [www.plaintownship.com](http://www.plaintownship.com)

*Pamela S. Bossart*

*Louis P. Giavasis*

*Albert P. Leno II*



**House Numbers Available**

Being able to find your residence or business is critical to aiding safety professionals in responding to an emergency.

Residents can obtain signs with a blue metal background and large reflective numbers to aid in locating addresses.

To order, please send the order form and a \$14 check to: **Plain Township Paramedics**, 3625 Middlebranch NE, Canton, OH 44705.

Please call Fire & Rescue at 330-492-4089 with any questions.

**Home Heating Safety Concerns**

State Fire Marshal Stephen K. Woltz is reminding Ohioans to focus on fire safety when heating their homes this winter and to use extra care if relying on alternative heating sources to save money on heating bills.

"We want Ohio families to stay both safe and warm. Safety should be your number one

consideration when heating your home. Unless the focus is on safety first, the results can be devastating," said Marshal Woltz. Last year, in Ohio, seven people died and 41 people were injured in 593 heating related fires in homes throughout the state. Those fires resulted in \$10 million in losses.

Marshal Woltz stresses the importance of having your home's heating system checked annually by a qualified professional. Furnaces, fireplaces, wood stoves and their chimneys should be inspected and cleaned prior to the start of every heating season.

Be certain you use alternate sources of heating, such as portable and kerosene heaters and wood burning stoves, according to their instructions and with extreme caution. For any space heater remember that - **Space Heaters Need Space** - at least three feet from anything that can burn.

To avoid falling victim to carbon monoxide -- a colorless, odorless, potentially deadly gas produced by fuel-burning equipment, such as furnaces, wood stoves, fireplaces, and kerosene heaters -- install at least one carbon monoxide alarm near sleeping areas. Call the fire department if the alarm sounds. Also, make sure you have working smoke alarms installed on every level of your home and inside each sleeping area to alert you in the event of a fire.

Marshal Woltz suggests giving smoke alarms and carbon monoxide alarms as gifts this holiday season. He also offers the following safety tips to help you have a fire safe winter.

**Fireplaces and Wood Burning Stoves**

\* Allow enough clearance between a wood burning

stove and combustible materials such as walls, floors and ceilings.

- \* A wood stove should be placed on an approved stove board to protect your floor from heat and hot coals.
- \* Make sure the flue is open before lighting a fire, and never close the flue while a fire is still smoldering.
- \* Use a fireplace screen to prevent any sparks from reaching out and igniting nearby objects.
- \* Never use gasoline or lighter fluid to start a fire.
- \* The immediate area in front of a fireplace (approximately 3 ft.) should not have a rug, carpet or exposed wood flooring.
- \* When lighting a gas fireplace, strike your match first, then turn on the gas.
- \* Burn only dry, seasoned wood and dispose of the cooled ashes in a closed metal container outside of your home.
- \* Never leave a fire burning unattended in the fireplace.

**Portable Space Heaters**

- \* When buying a space heater, look for a control feature that automatically shuts off the power if the heater falls over.
- \* Never leave a heater on when you are not in the room or when you go to sleep, and do not leave children or pets unattended around any heating source. Unplug it when you are not using it.
- \* Don't use an extension cord with an electric portable heater.



**House Numbering Order Form**

Name: \_\_\_\_\_

Phone: \_\_\_\_\_

Address: \_\_\_\_\_

City: \_\_\_\_\_

Zip: \_\_\_\_\_

Number on sign: \_\_\_\_\_

Direction of numbers on sign:  
 Horizontal  
 Vertical

**Proceeds benefit the Plain Township Fire/Medics Association**

(Continued on page 3)

(Continued from page 2)

The current from the heater could melt the cord and cause a fire.

- \* Don't plug more than one heating device into an outlet.
- \* Never use electric heaters near water - like in your bathroom or near a water heater.

### Kerosene Heaters

- \* Make sure the room has proper ventilation.
- \* Fill your heater with only crystal clear, K-1 kerosene. Do not use any fluid that is not recommended for your heater. Refuel outside, and *only after the heater has cooled down*.
- \* Check the wick every couple of weeks during the heating season. If the wick is dirty, clean it according to the manufacturer's instructions.
- \* Since a kerosene heater has a constant open flame, it should not be used in a room where there are flammable solvents, aerosol sprays, gasoline or any type of oil.



### Propane

- \* Like many other efficient fuels, propane is highly flammable. That means it can be dangerous if not handled properly.
- \* If using a propane fueled heater, make sure it is designed for indoor use and properly vented. Read all of the manufacturer's instructions and make sure it is properly vented.
- \* Do not use propane barbecues (or any other type of barbecue) indoors.
- \* If you smell gas, do not operate any switches, appliances or thermostats. A spark from one of these could ignite the gas. Get everyone outside and away from the building. Shut off the gas supply. Call the fire

department from a neighbor's phone.

### Generators

- \* If you have a portable generator, make sure you place it in a well-ventilated area. Read the manufacturer's instructions before using it.
- \* Be sure generator fuel is properly and safely stored according to fire regulations.

Never store fuel or flammable liquids in a basement or near an open flame. Always refuel the generator outdoors and away from any ignition sources.

\* If you choose to have a generator permanently connected to your home's electrical system, make sure a licensed electrician installs it and be sure to notify your electric company. Improperly installed generators can cause multiple types of hazards not only for you but for power company workers as well.

### Aluminum Cans for Burned Children (ACBC)

ACBC was started in 1985. Its goal was to provide funding to help burned children and their families emotionally and physically return to normal lives.

ACBC helps child burn victims and their families by providing the following:

- \* special protective clothing not covered by insurance
- \* non-medical items such as pets and toys lost in home fires
- \* bicycles that help children exercise their injured bodies
- \* transportation to outpatient treatments

Many special events and programs for



## General Recycling Information



Self-service recycling is open every day from dawn to dusk at the following three sites:

- \* Diamond Park, 2782 Diamond NE - west parking lot
- \* Taft & Day School grounds, on Salway NW
- \* K-Mart, 3801 Harmont Ave. NE

Separate recyclables as follows:

- \* Newspapers/magazines
  - \* Plastics (#1 & #2)/glass
  - \* Food boxes
  - \* Aluminum/steel
  - \* Flat corrugated cardboard
- Please call Stark County Recycling at **330-451-7808** with any questions.

For information on disposal of other items, call the Joint Solid Waste Management District at **1-800-678-9839**.

child burn victims are also funded by ACBC:

- \* annual holiday party
- \* summer burn camp
- \* fire safety education programs that help prevent future tragedies
- \* plus an annual weekend outing for adult burn patients who have been treated at the Akron Regional Burn Center

Through your donations of aluminum cans and fund-raising events, we are able to continue to make a difference in so many lives. Your contribution of aluminum cans at the Fire Stations is greatly appreciated.



## Neighbor vs. Neighbor vs. Drainage

There is nothing more exciting than building your own home; however, drainage problems can quickly turn your dream into a nightmare for both you and your neighbors. When looking at the site, take into consideration the elevation. Does it sit lower than the surrounding homes? Will using fill alter the drainage path? Are there steep slopes? What type of soil is there? These are some concerns that you need to discuss with your builder. What you do may affect many others and it's good to remember the Golden Rule: do unto others as you would want done unto you. Be considerate of your neighbors and think of how you may affect them. It's important to remember that water does flow

downhill. Some homeowners forget this little detail and will direct water onto a neighboring property. This spells trouble with a capital T. The idea is to assist the natural flow across your lawn in the same direction as before you built. Landscaping mounds need special attention as they can alter the water flow to a different direction. Also, don't outlet your downspouts at the property line; instead let the water filter at least 25 feet over your property. There are many ways to handle roof run-off and you may need to do a little homework to find one that works for you that won't affect your neighbors. A little forethought can reduce or eliminate many of these potential drainage problems. With the amount of rain we have been experiencing lately, you may encounter drainage problems even if you've never had them before. (Mother Nature does have a sense of humor that way). But don't panic, there are solutions. Walk the drainage path; see if something has changed in the watershed. Also, talk with your neighbors. Most are willing to work together for a solution that is acceptable to all involved. As many homeowners know, there is nothing more frustrating than having a drainage problem caused by someone else, unfortunately you may not be very sympathetic until you've experienced it for yourself. Since there is no agency that takes care of these kinds of disputes, it's up to all of us to take responsibility for our actions and to be a good neighbor.

*Reprinted with permission from Stark Soil and Water Conservation District*

## Plain Township Historical Society

The Plain Township Historical Society elected its first officers:

- \* President—Tom Pieper
  - \* Vice-President—Linda Dessauer
  - \* Secretary—Judy (Cloud) Pocock
  - \* Treasurer/Auditor—Ruby (Kandel) Bair
  - \* Trustee—Dawn (Firestone) Pegg
  - \* Trustee—Tom Kolp
- Committee Chairmen:
- \* Membership—Katherine Kapalko
  - \* Communication/Publicity—



- \* Dawn (Firestone) Pegg
- \* Historic Sites—Judy (Cloud) Pocock & Al Meyer
- \* Education—Dave Ross
- \* Programs—Linda Dessauer

Meetings are held on the third Monday of the month at 7:00 p.m. at the Plain Township Hall, 2600 Easton Street NE. Due to the busy holiday season, there will be no meeting held in December. The meetings are open to anyone interested in the history of Plain Township.

We are looking for pictures, yearbooks, notebooks, letters,

writing and old newspaper articles pertaining to the early days of the township for our historical library. These materials can be either donated or lent to the society for copying.

A colored map of Plain Township from the 1870 Atlas is being sold for \$5.00, and can be purchased at the monthly meetings.

For more information, call:

- \* Tom 330-494-6187
- \* Judy 330-492-3566
- \* Dawn 330-493-1731



**New Recreational Programs**

The Parks Department is happy to announce the following new recreational programs for pre-schoolers:

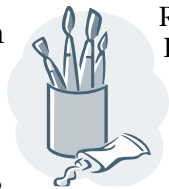
**Squeaky Sneakers** (8 weeks)



Our "Squeaky Sneakers" is an open gym program for preschoolers. We have balls, blocks, mats, parachutes and more. This is a great time to run off all that extra energy, meet other families, and play with your child. Parent or Guardian must accompany and interact with their little ones. Sneakers required. Age 2 to 4 years. Mondays January 9 through February 28 and Fridays January 13 through March 3. Time 9:30 am to 11:00 am each day.

**Messy Hands** (8 weeks)

"Messy Hands" is a craft class designed to get children and adults creating together using clay, paint, and common household items. Create fun works of art, while spending quality time with your youngster. Please dress children in old clothes, we promise to get messy. Age 2 to 4 years. Tuesdays January 10 through February 28 and Thursdays January 12 through March 2. Time 10:00 am to 11:00 am each day.



**Mini Mozarts** (8 weeks)

Make Wednesdays a musical day of singing, dancing, and playing instruments. You and your child will have the opportunity to participate in musically fun activities that will further your child's understanding and development. Enjoy teachable moments, laughter and bonding. Age 2 to 4 years. Wednesdays January 11 through March 1. Time 10:00 to 11:00 am.

Cost is \$2.00 per class, or save \$7.00 and sign up for 16 classes for \$25.00. Pre-registration is required. We will be offering another eight-week session beginning the first week of March. To register, stop in at the Parks Office located at Diamond Community Park, 2782 Diamond St. NE, or call the Parks Office at 330-499-0000. All classes will be held at Diamond Community Park in the Indoor Soccer Arena.

**Indoor Soccer**

Indoor Soccer for the second session begins January 30. Registration will be January 3 through 22, 2006. We will only be registering for teams to play in the U-10, U-12, U-14, High School Boys, Adult Coed and Sr. Men's Divisions. For team application forms, contact the Parks Department or download from the Township's website: [www.plaintownship.com](http://www.plaintownship.com)

**Park Reservations**

Reservations for the Alpine Park shelters and Diamond Community Room for the year 2006 will be taken beginning January 3, 2006. Diamond Community Room is located in the indoor soccer building at 2782 Diamond St. NE. It has a maximum capacity of 46 people. There are six round tables with chairs, a microwave, refrigerator, and sink. There is a refundable \$25.00 deposit for using the room.

Alpine Park is located at Alpine & Pinetree NE, and has two open shelters which can be reserved. The park also has a walking track, basketball, tennis and volleyball courts.

Call 330-492-4689 and press 2 to make reservations.



**Parking Snow Ban**

Please remember that no parking is allowed on the paved surface of posted streets when there is more than two inches of snow on the ground. Several Township roadways will be posted this year with "no parking" signs. The ban **will be strongly enforced**.

We also request that residents on unposted streets be courteous in moving their cars so that plowing can be done in a timely manner.

**Winter Reminders**

Please note the following additional winter reminders:

- \* Please do not put trash cans in the roadway when it snows.
- \* Please remember to stay at least 50 feet back from salt trucks so that your vehicle is not damaged by salt spreaders. This also is helpful when at an intersection as the salt truck may have to back up. If you are too close, your vehicle may not be visible to the driver through the mirrors.
- \* Portable basketball hoops must be removed from the township right-of-way.
- \* We apologize for snow blocking driveways and cul-de-sacs; however, at times this is unavoidable.
- \* If snow plows knock down your mailbox, please call us. After the snowfall has ended, mailboxes will be repaired as time allows, in the order requests were received.
- \* Main roads throughout the Township are salted and plowed first; then the secondary roads. Trucks are assigned to specific areas and no area has priority over any other.
- \* If your yard or driveway apron is damaged from snow plows, please call us and your name will be put on a list for **repairs in the spring**.
- \* The Road Dept. does not plow private driveways or roads.

## Contact List

<b>Elected Officials</b>	
Trustees	330-492-4689
Fiscal Officer/Finance	330-493-1366
County Commissioners	330-451-7371
<b>Fire and Rescue</b>	
Fire Administration	330-492-4089
Emergency Calls	911
<b>History</b>	
Historical Society	330-494-6187
<b>Parks/Recreation</b>	
Township Parks	330-499-0000
Diamond Comm. Rm.	330-492-4689
Shelters (Alpine Park)	330-492-4689
Community Soccer	330-499-2222
	www.communitysoccerclub.com
Holly Hills Baseball	330-494-8250
Holly Hills Softball	330-493-8441
Plain Loc. Baseball	330-218-3234
Plain Loc. Softball	330-478-8706
Midget Football	330-966-2475
	www.plainlocalfootball.org
<b>Police</b>	
Stark County Sheriff	330-430-3800
<b>Real Estate Records</b>	
County Auditor	330-451-7334
<b>Recycling</b>	
Stark Co. Recycling	330-451-7808
Solid Waste District	1-800-678-9839
<b>Road/Storm Sewer Maintenance</b>	
County Roads	330-477-6781
State Roads	330-452-0365
Township Roads	330-492-3423
I-77 Project	1-866-ROADWISE
<b>Schools</b>	
Canton City	330-438-2500
North Canton	330-497-5600
Plain Local Admin.	330-492-3500
Plain Bus Garage	330-492-1918
<b>Sanitary Sewers</b>	
Sanitary Engineering	330-451-2303
<b>Septic Systems/Water Wells</b>	
County Health Dept.	330-493-9904
<b>Voter Registration/ Information</b>	
Board of Elections	330-451-8683
<b>Water Service</b>	
Canton Water	330-489-3315
North Canton Water	330-499-4801
<b>Zoning/Building Permits</b>	
Township Zoning	330-492-4686
County Building	330-451-2370


## PLAIN TOWNSHIP TRUSTEES

2600 Easton Street NE, Canton, OH 44721-2655

PRSR STD  
U.S. POSTAGE  
PAID  
PERMIT #277  
CANTON, OH

<b>Administration:</b>	330-492-4689	<b>Planning:</b>	330-492-4689
<b>Finance:</b>	330-493-1366	<b>Road:</b>	330-492-3423
<b>Fire/Rescue:</b>	330-492-4089	<b>Sheriff:</b>	330-430-3800
<b>Parks/Rec:</b>	330-499-0000	<b>Zoning:</b>	330-492-4686

E-mail: [general@plaintownship.com](mailto:general@plaintownship.com) or  
visit our website for an e-mail directory  
Website: [www.plaintownship.com](http://www.plaintownship.com)



### *Yard Waste and Christmas Trees*

The drop-off at Fire Station #4 (2855 Easton St. NE) will be open between December 5 and January 14 on Monday, Thursday, and Saturday from 8:00 a.m. to 6:00 p.m. The site will then be closed for the rest of the winter season, and reopen on March 20. The site accepts yard waste and Christmas trees. Plastic bags are unacceptable.

The drop-off at Warstler Brothers Landscaping, 4125 Salway Ave. NW, will close on December 15 for the winter, and reopen on March 15.